

# Potter's Wheels

## Pacifica Electric Wheels

### PACIFICA MODEL GT400 & GT800

Equipped with a welded steel frame, 13" machined aluminum wheel head, durable molded table and easy to remove splash pan. The quiet, high torque "Magic pedal" is equally smooth at low speeds and is reversible. Splash pan included. Comes with two year warranty. Pacifica wheel accessories are listed on page 60.

**GT400 - Delivers 1/2 HP, centers 50 lbs.**  
List \$895 - **Our Price \$805.50**

**GT800 - Delivers 1 HP, centers 100 lbs.**  
List \$1015 - **Our Price \$913.50**



**SEAT OPTIONAL**  
**\$134**

## Brent Electric Wheels

All Brent wheels have sensitive electronic foot pedal controls, smooth-running permanent magnet D.C. motors, reversing switches, and all-steel construction. Brent's electric wheels are very sturdy and dependable. Each wheel comes with a five-year warranty. Brent wheel accessories are listed on page 60.



**MODEL EX/CXC/C/B**  
(models have similar appearance)



**MODEL IE/IE-X**  
(models have similar appearance)



**MODEL IE-T**

### MODEL EX

The most powerful Brent wheel available. The heavy-duty 1-1/2 hp motor has the power to center over 100 lbs. of clay! The 14" cast aluminum wheel head can handle virtually any throwing project.  
List \$1645 - **Our Price \$1481**

### MODEL CXC

A longtime best seller. Comes equipped with a 1 HP motor, 14" cast aluminum wheel head, and can center up to 100 lbs. of clay.  
List \$1495 - **Our Price \$1345**

### MODEL C

A workhorse wheel. Equipped with a 1/2 HP motor, 14" cast aluminum wheel head, and can center up to 50 lbs. of clay.  
List \$1325 - **Our Price \$1192**

### MODEL B

Excellent for schools and studios. Comes with 1/3 HP motor, 12" cast aluminum wheel head, splash pan, and can center up to 25 lbs. of clay. Splash pan included.  
List \$1250 - **Our Price \$1125**

### MODEL IE-X

Dependable wheel. Equipped with a 1/3 hp motor and 14" cast aluminum wheel head. Handles up to 25 lbs. of clay.  
List \$945 - **Our Price \$850**

### MODEL IE

Economical and well built. Equipped with a 1/4 hp motor and 12" cast aluminum wheel head. Can center up to 20 lbs. of clay.  
List \$795 - **Our Price \$715**

### MODEL IE-T

The first Brent tabletop potter's wheel. Equipped with a 1/4 hp motor and 12" cast aluminum wheel head. Wheel weighs only 54 lbs. Pedal is designed to be operated either by foot or by hand.  
List \$725 - **Our Price \$652**



### BRENT SPLASH PAN

Fits all Brent models. Available in yellow and red/brown.  
**\$49.50**



**Saadi Shapiro**  
Service Manager

There are many things to consider when buying a wheel. These include motor size, work space area, splash pan, wheel noise, durability, and cost.

We will help you find the wheel that is the best value for you. Also, you can "test drive" wheels at ClayPeople.

# Potter's Wheels

## Shimpo Whisper Wheels

### SHIMPO VL WHISPER

The quietest potter's wheel on the market. Responsive, high torque at all speeds, and powerful. Comes equipped with a 1/2 HP motor, a 14" wheelhead allowing you to center up to 100 lbs. Features a reversing switch, a remote foot pedal, and adjustable height to accommodate all throwing positions. Comes with a free splash pan and a two-year warranty.

List \$1195 - **Our Price \$1075.50**



### SHIMPO RK WHISPER

Responsive, high torque at all speeds, powerful and quiet. Comes equipped with a 1/2 HP motor, a 12" wheelhead allowing you to center up to 100 lbs. Features a reversing switch, a fixed foot pedal and hand lever. Accommodates left and right hand users. Comes with a free splash pan and a two-year warranty.

List \$1095 - **Our Price \$985.50**

### Optional Work Table Attachments

Large **\$161.00**  
Small **\$102.50**

## Laguna Kickwheel

The Laguna Kickwheel combines the durability and toughness of old-fashioned kickwheels with the style, performance and engineering demanded by today's potters. Heavy gauge, steel frame provides a solid and stable base. A tapered roller bearing under the flywheel keeps the wheel spinning smoother and longer. And it's rated for 1,000 pounds of weight. 4 sq. ft. worktable and seat are ergonomically designed to maximize the work area while providing comfortable knee clearance. The seat can be adjusted up and down and can be reversed for longer or shorter legs. Splash pan is included. 30 Day Total Satisfaction Guaranteed.

### KICKWHEEL

**Our Price \$775**

### MOTORIZED KICKWHEEL

**Our Price \$1010**

**LE-100MK Motor Adapting Kit \$335**

Converts standard kickwheel to motorized model.



# Wheel Accessories

## Wheel Leg Extensions

### BRENT LEG EXTENSION KIT

Raise your wheel to standing height to reduce stress on your back. This leg extension kit fits wheels B, C, or CXC and adjusts the wheel head height from 31 1/2 inches up to 42 inches high. **\$360**



### PACIFICA WHEEL LEG EXTENSIONS

Two optional leg extensions increase the versatility of the Pacifica wheel, adding up to 10" (Extension A) or 23" for stand up throwing (Extension B) to the height of the wheel.

**Extension A \$41.00**  
**Extension B \$92.00**

### PACIFICA WORKSTATION

Triplies work space to over 7 square feet. Puts tools and pots at your fingertips. Installs in less than 5 minutes.

Fits Pacifica wheels, Shimo V35, V75 and VL Whispers, Brent B, C, CXC, EX. **\$125**



## Potter's Stools



### SHIMPO POTTER'S STOOL

Cushion Seat. Adjustable Legs: Allows for tilted seating. Adjustable, 18" to 25" tall: **\$59.95**  
Non Adjustable 18" tall: **\$45.95**



### CREATIVE INDUSTRIES ST5 POTTER'S STOOL

An institutional potter's stool with a thin, firm, durable cushion. Manual height adjustment. 17 lbs. **\$79**



### BRENT POTTER'S STOOL

Potter's stool that fits all wheels, made from heavy gauge tubular steel. **\$55**

### PACIFICA POTTER'S SEAT



A solid, comfortable and adjustable, padded seat that will allow you to throw for hours on end. The seat easily mounts onto the leg of your Pacifica wheel, and large grip knobs make for easy adjustment. **\$148**

# Wheel Accessories

## Bats

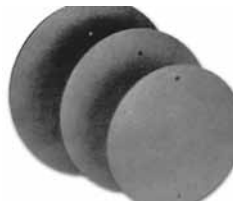
### BRENT PLASTI-BAT

Plasti-Bat was designed by studio potters to be a versatile, long-lasting, high-quality bat that is virtually indestructible. Made of rigid, high impact plastic.

12"	\$12.95	18"	\$27.49
14"	\$17.95	22"	\$37.95
16"	\$24.95		

### MASONITE THROWING BATS

Masonite bats calibrated for Brent, Pacifica, Shimpo Master, and Lockerbie wheels.



12" drilled bats	\$3.50/ea.	\$38.00/dozen
14" drilled bats	\$4.55/ea.	\$48.00/dozen
15" drilled bats	\$5.50/ea.	\$60.00/dozen

### MEDEX BATS

Wood product without formaldehyde, 3/8" thick. Handles like masonite. Waterproof, no warping, extremely strong. More expensive, but super long life.

18"	\$16.25
22"	\$21.25

### PLASTER BATS

Made from top quality plaster for a combination of good water absorption and wear resistance. Will stick to wheel head without bat pins.

8"	\$5.75	10"	\$8.10
12"	\$6.99	14"	\$9.25

### CREATIVE INDUSTRY BATS

These bats are made out of injection molded plastic. They can't warp, the pin holes can't enlarge, and they will never wear out. Unique design allows bat to fit any bat pin configuration



7-1/2" Square	\$4.50
12" Diameter	\$6.50
14" Diameter	\$7.50

### FOAM TRIMMING BAT

Firm foam bat for trimming. Allows you to quickly set your work on the wheel for trimming, shaping or texturing. Pliable foam grips regardless of irregularities in the shape of your piece, bottom or top.

**\$19.95**



### BAT PINS

Fits all bats pair **\$3.95**

### GRINDING DISKS

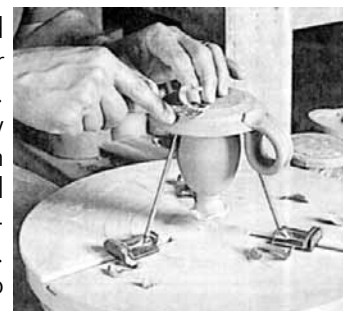
12" diameter silicon carbide grinding disks with peel-off adhesive backing. Attach to a 12" bat and grind at the highest wheel speed. The 50 grit takes of material fastest, while the 80 grit gives the smoothest finish.

80 Grit	\$9.95/each
50 Grit	\$9.95/each

### GIFFIN GRIP

A re-centering and holding tool for leather hard or bisque ware. Designed specifically for trimming, although it works equally well for waxing and banding ware with slips. Includes Giffin Grip basic and wider sets. 2", 4" & 6" arms.

**\$199.95**



## Kiln Discounts

Saadi Shapiro  
Service Manager

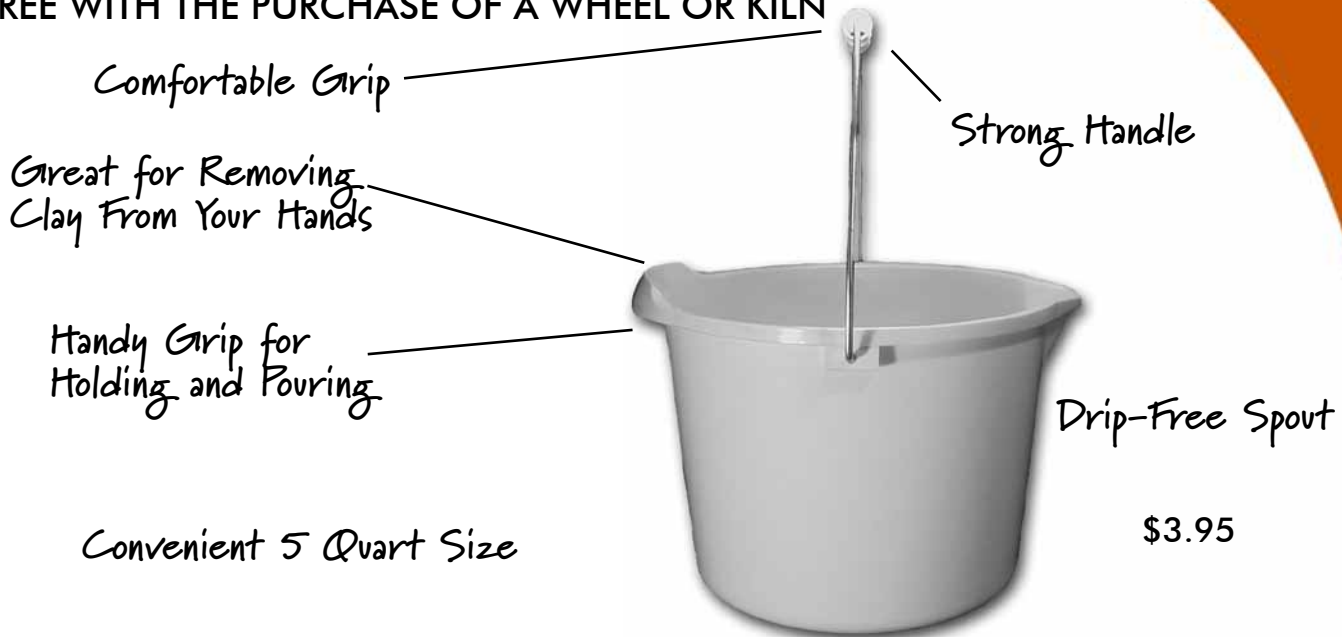
We sell most kilns at 10% off list price. We can special order any kiln not featured in our catalog. Call today.

We repair kilns and most other types of ceramic equipment, see page 71 for further information.

# Banding Wheels

## The Perfect Throwing Bucket!

FREE WITH THE PURCHASE OF A WHEEL OR KILN



Convenient 5 Quart Size

\$3.95

### Banding Wheels

Doubles as a Tool Caddy

#### PLASTIC BANDING WHEEL

This ruggedly constructed turntable is excellent for hand building and decorating. Concentric rings assist in centering your ware for banding. The wheelhead rotates on three ball bearings, precisely placed to maintain smooth, stable turning. 8" x 1-1/2"  
\$14.95



#### CSI TURNTABLES

Heavy duty, very stable banding wheels. "Lazy Susan" type bearing system. Top and bottom are particle board with durable formica cover. Easily cleaned with damp sponge or wet cloth (do not submerge in water). 8" wheel can handle up to 300 lbs. and 12" and 16" wheels can handle up to 500 lbs.



Diameter	Each
8"	19.95
12"	27.95
16"	34.95

#### LAGUNA BANDING WHEELS

These banding wheels represent excellent workmanship featuring cast iron/aluminum wheels and a ring of steel ball bearings for smooth and easy operation. The concentric circles on the head allow for easy centering. All but the 2" wheels offer high shank for easy use for large hands.



#### SHIMPO BANDING WHEELS BW SERIES

These banding wheels feature precise ball bearing rotation. Concentric rings are marked on the wheel head for easy centering. They turn evenly and smoothly. Heavy duty construction and rust resistant finish.



Diameter	Height	Each
8-1/2"	2"	57.95
8-1/2"	5"	47.95
8-1/2"	6-1/4"	72.95
10-1/2"	6-1/4"	81.95
12"	2"	83.95
12"	6-1/4"	94.95

Model	Diameter	Height	Each
BW-18L	7-1/8"	2-1/4"	46.00
BW-22L	8-3/4"	2-1/4"	56.00
BW-25L	9-7/8"	2-1/4"	76.00
BW-25H	9-7/8"	7-1/2"	86.00
BW-30M	11-3/4"	4-3/4"	100.00